

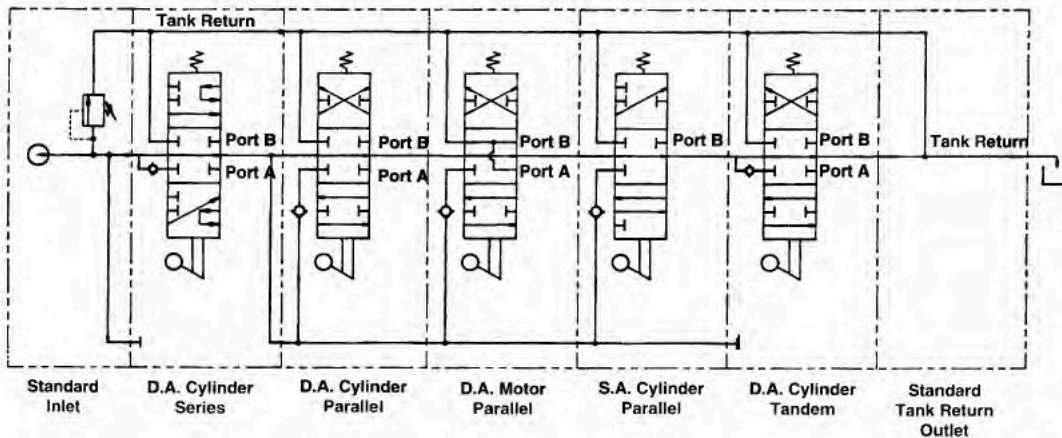


| Valve Model | Flow | Pressure | Replaces |
|------------------|--------|----------|---------------|
| V20 Gresen | 25GPM | 3500PSI | DVG12 |
| DVA20 Commercial | 40GPM | 2500PSI | 25P, V40, V42 |
| DVG20 Commercial | 40GPM | 3500PSI | 25P, V40, V42 |
| DVA35 Commercial | 70GPM | 2500PSI | V50 |
| DVG35 Commercial | 70GPM | 3500PSI | V50 |
| V90 Gresen | 120GPM | 3500PSI | DVG80 |

Features

- Built-in, full-flow relief valves
- Parallel and series circuits in one bank
- Manual, hydraulic, electric or pneumatic operation
- Sectional construction for maximum flexibility
- Porting available in ORB, NPT and SPF
- Exceptional size to pressure drop ration
- Differential main relief - quick response and low pressure rise
- Post compensated available in the PC25 and PC55
- Mobile load sense directional valve
- Flows of up to 30 gpm and 5000 psi maximum pressure
- Fits into any type of pumping system
- Regulates flow precisely and repeatedly
- Can be controlled manually, remote hydraulically or electro hydraulically
- Can be stacked to provide the required number of control segments

Typical Work Section Schematics



Circuit Descriptions

Parallel Circuits

Parallel circuits are the most common on mobile equipment because more than one function can be operated simultaneously and at random. If two or more functions are fully operated at the same time, the one with the lightest load will assert priority because the fluid will take the path of least resistance. However, the operator can divide the flow between functions by metering the spools.

Movement of the spool meters or shuts off the flow of oil thru the open center passage and pressurizes the parallel passage. Oil is then available, at the operator's discretion, to all work ports connected to the parallel passage.

Tandem Circuits

Tandem circuits are sometimes called priority or standard circuits by other manufacturers. Tandem sections feed from the open center passage like series sections but the return flow is directed to the tank return passage and is not available downstream.

If a tandem section is followed by a series of a tandem section, operating the tandem section nearest the inlet will assert priority and downstream sections will not function.

Note

Commercial® and Gresen® valves now manufactured by Parker are the industry leader and provide superior control. These valves are designed for mobile applications that are in harsh environments.

** Please call our inside sales team to have a valve assembly created for you.



Valves have SEPARATE TRANSITION CHECKS built into each spool for positive control. Positive cylinder movement is maintained. Valves not exactly as pictured.

| 30 Gallon Valve | | 50 Gallon Valve | |
|---|--------------|-----------------|---------|
| Part Number | SECTION | Part Number | SECTION |
| INLET COVER LEFT SIDE WITHOUT RELIEF VALVE Must order Relief Valve Cartridge | | | |
| Cover Plate with end and top inlet NO outlet | DVA20-A880 | DVA35-A980 | |
| CENTER SECTION - LO-BOY | | | |
| With Double Acting Spool 4 way | DVA20-DA7 | DVA35-DA8 | |
| With Single Acting Spool 3 way | DVA20-SA7 | DVA35-SA8 | |
| With Double Acting Spool & Float 4 way | DVA20-FC7 | | |
| With Double Acting Spool, Detents & Free Wheeling for Motors | DVA20-MB7 | | |
| With Double Acting Spool, Spring Return Free Wheeling for Motors | | DVA35-MA8 | |
| With Double Acting Spool, 4 way, 12 Volt | DVA20-DK7* | DVA35-DK8* | |
| With Double Acting Spool, 4 way, Airshift | DVA20-DV7 | DVA35-DV8 | |
| CENTER SECTION - HI-BOY | | | |
| With Double Acting Spool, 4 way | DVA20-HA755 | DVA35-HA855 | |
| With Single Acting Spool, 3 way | DVA20-JA705 | DVA35-JA805 | |
| With Double Acting Spool & Float, 4 way | | DVA35-GC855 | |
| With Double Acting Spool, Spring Return & Free Wheeling for Motors | DVA20-LA755 | DVA35-LA855 | |
| With Double Acting Spool, 4 way, 12 Volt | DVA20-HK755* | DVA35-HK855* | |
| With Double Acting Spool, 4 way, Airshift | DVA20-HV755 | DVA35-HV855 | |
| MID-INLET CONVERSION SECTIONS | | | |
| With Top Inlet, Comb. Flow | DVA20-CFA70 | DVA35-CFA80 | |
| With Top Inlet, Split Flow | DVA20-SFA70 | DVA35-SFA80 | |
| OUTLET COVER RIGHT SIDE | | | |
| Cover plate for Power Beyond or Closed Center | DVA20-PB80 | DVA35-PB90 | |
| Cover plate with end & top outlet for Open Center ONLY | DVA20-TR88 | DVA35-TR99 | |
| HANDLE ASSEMBLY | | | |
| Order 1 for each spool | DV20-H-6 | DV35-H-6 | |
| For DVA Section 10" | DV20-H-10 | DV35-H-10 | |
| THROUGH BOLT KITS COVER PLATES DO NOT COUNT AS SPOOLS TORQUE TO 20 FOOT LBS.—NO MORE | | | |
| For 1 Spool Valves (NOTE: Bolts Priced Per Set) | DVA20-SK-1 | DVA35-SK-1 | |
| For 2 Spool Valves | DVA20-SK-2 | DVA35-SK-2 | |
| For 3 Spool Valves | DVA20-SK-3 | DVA35-SK-3 | |
| For 4 Spool Valves | DVA20-SK-4 | DVA35-SK-4 | |
| For 5 Spool Valves | DVA20-SK-5 | DVA35-SK-5 | |
| For 6 Spool Valves | DVA20-SK-6 | DVA35-SK-6 | |
| For 7 Spool Valves | DVA20-SK-7 | DVA35-SK-7 | |
| For 8 Spool Valves | DVA20-SK-8 | DVA35-SK-8 | |
| Slug Adj. 1000 PSI Relief without A/C 500 1000 PSI | DV-PRV-1 | DV-PRV-1 | |
| Slug Adj. 2000 PSI Relief without A/C 1000 2500 PSI | DV-PRV-2 | DV-PRV-2 | 76.62 |
| 2500 PSI Comb. Relief with Anti Cavitation 500 5000 | DV-PRVAC | DV-PRVAC | 123.40 |
| Work Port Relief Plug for Hi Boy Valves | DV-PRVP | DV-PRVP | 23.19 |
| Seal kits Sectional seals only | DV20-K-1 | DV35-K-11 | |
| Seal kits Order 1 each spool with sectional seals | DV20-K-2 | DV35-K-12 | |
| Seal kit for DVA Port Relief Valve without A/C | DV20-K-3 | DV35-K-3 | |
| Seal kit for DVA Port Relief Valve with A/C | DV20-K-3-1 | DV35-K-3-1 | |
| Seal kit for DVA20 & DVA35 Air Shift | DV-K-7 | DV-K-7 | |
| Relief Plug required for Closed Center Valves | DVA20-MRVP | DVA35-MRVP | |
| Adj. Main Relief Cart. for Power Beyond & Open Center Valves | DVA20-MRV | DVA35-MRV-2 | |
| Detent kit 3 Position | DV20-K-101 | DV35-K-201 | |
| Spring Return | DV20-K-100 | DV35-K-200 | |
| Rotary Control Actuators | DV20-K-102 | DV35-K-202 | |
| Airshift Actuators | DV20-K-113 | DV35-K-213 | |
| Solenoid Actuators 12 Volt DC | DV20-K-106* | DV35-K-206* | |

* SOLENOID SECTION and INLET NEED PILOT SUPPLY MACHINING.

**MEDIUM SIZE
 DVA20 VALVES
 30 Gallon Capacity
 2500 PSI**

- 1-5/16" O-Ring B Top Inlet Port
 And
 1-5/16" O-Ring End Inlet Port
- 1-5/16" O-Ring Top Outlet Port
- 1-1/16" O-Ring Cylinder Port
- 1-5/16" O-Ring End Power Beyond Port

**LARGE SIZES
 DVA35 VALVE
 50 Gallon Capacity
 2500 PSI**

- 1-5/16" O-Ring B Top Inlet Port
 And
 1-5/8" O-Ring B End Inlet Port
- 1-5/8" O-Ring Outlet Port
- 1-5/16" Cylinder Port
- 1-5/8" O-Ring End Power Beyond Port