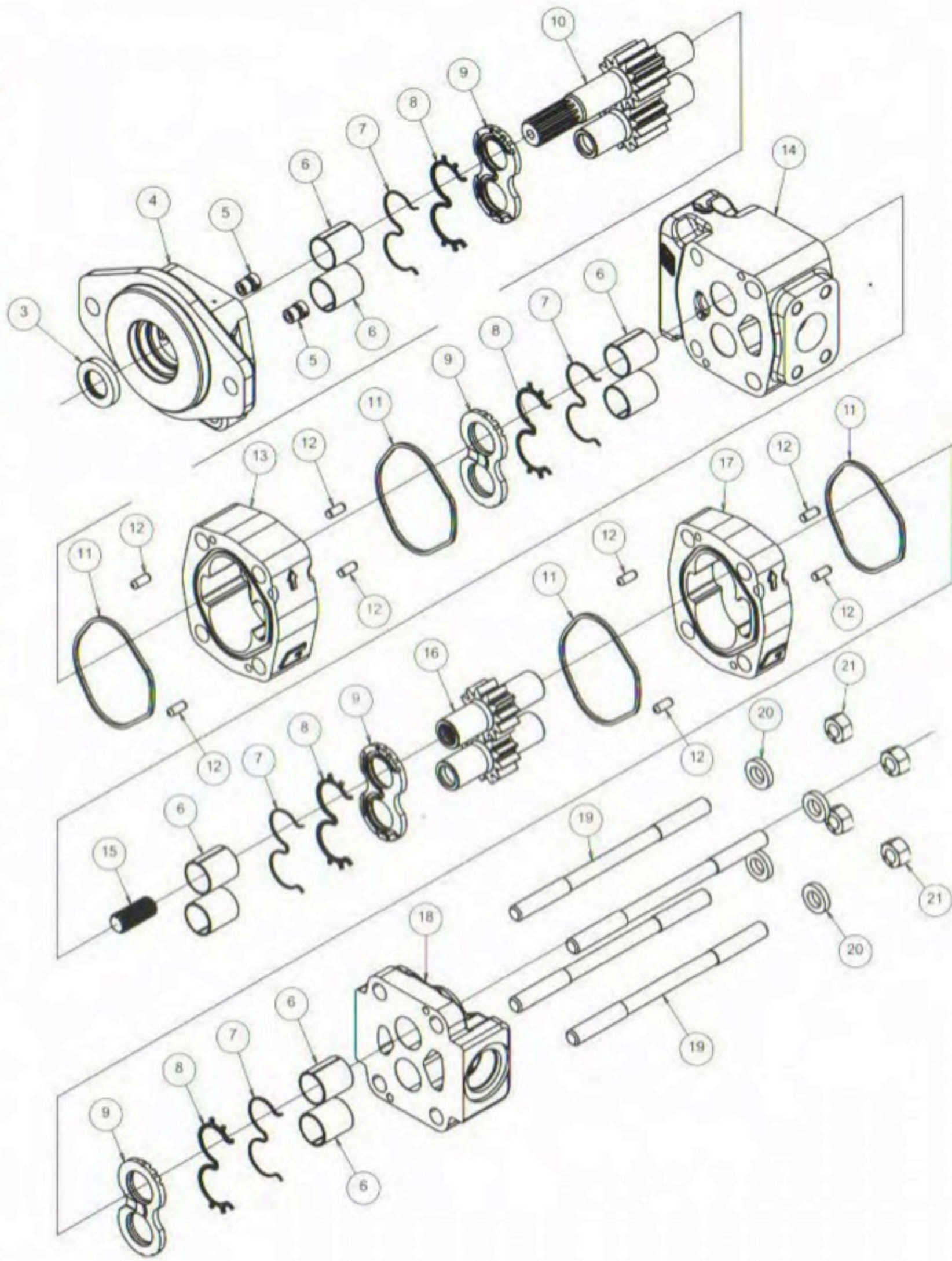


# PGP/PGM 315 Pumps and Motors

## PGP/PGM 315 Standard Parts List

Item No.	Description	Required	Ten Digit No. (TDN)
1	Snap Ring	N/A	
2	Outboard Bearing	N/A	
3	Seal — pump	1	391-2883-151
	Seal — motor	1	391-2883-156
4	Shaft End Cover	1	326-50XX-XXX*
5	Checks — motor	2	391-3681-001
6	Bushings	4	391-0482-195
7	Seals — pump-per section	2	391-2883-169 (back-up seal)
8		2	391-2883-168 (channel seal)
7	Seals — motor-per section	2	391-2881-995 (back-up seal)
8		4	391-2881-996 (end channel seal)
		4	391-2881-997 (side channel seal)
9	Thrust Plates — pump	2	391-2185-963
	Thrust Plates — motor	2	391-2185-970
10	Gear Set	1	326-29XX-XXX*
11	Gasket Seal — pump	2	391-2881-968
	Gasket Seal — motor	2	391-2881-429
12	Dowel Pins	4	391-2082-071
13	Gear Housing — pump	1	326-81XX-100*
	Gear Housing — motor	1	326-82XX-100*
14	Bearing Carrier	1	326-7XXX-XXX*
15	Connecting Shaft	1	326-1133-001
16	Gear Set	1	326-28XX-XXX*
17	Gear Housing — pump	1	326-81XX-100*
	Gear Housing — motor	1	326-82XX-100*
18	Port End Cover	1	326-30XX-XXX*
19	Studs or Cap Screws		
	Studs	4	391-1426-XXX*
	Cap Screws	4	391-1401-XXX*
20	Washers	4	391-3782-132
21	Nuts	4	391-1451-051

\* = Varies depending upon gear width and/or configuration



**Parker Hannifin Corporation**  
 Gear Pump Division  
 1775 Logan Avenue, Youngstown, OH 44501 USA  
 Tel: (330) 746-8011 • Fax: (330) 746-1148  
<http://www.parker.com/gearpump>