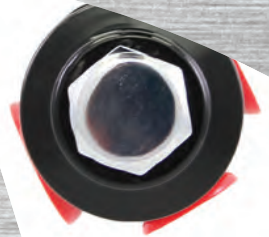
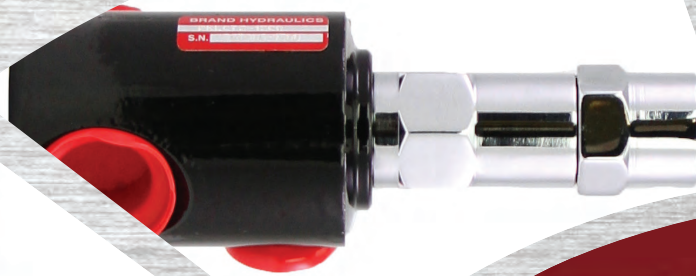


BRAND
HYDRAULICS Co.

Made in the Heartland of America
Serving the World

Engineering & Manufacturing Solutions



PRL75-1500

RL

Adjustable Hydraulic
Relief Valves



PRLC16-1500



PRLC75-1500



Specifications:

- Pressure rating 3000 psi (207 bar).
- Pressure setting 150-3000 psi (10-207 bar).
- See creating a model code for flow capacity.
- Weighs 2 1/4 lbs (1.0 kg).



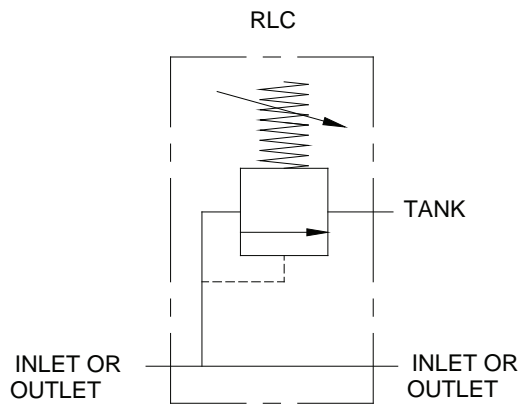
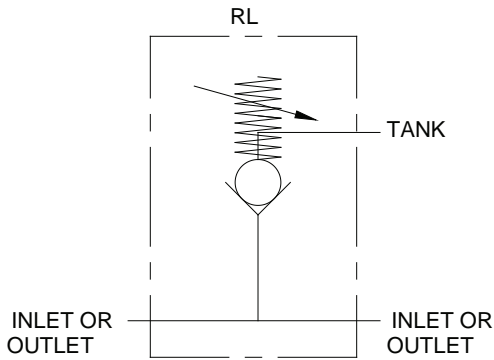
ISO 9001:2008 WITH DESIGN
Certificate #02.002.1



402.344.4434 • www.brand-hyd.com



RL Adjustable Hydraulic Relief Valves



PRLC16-1500



MATERIALS:

- Zinc Plated Steel Body
- Chrome Alloy Steel Ball
- Hardened Alloy Steel Seat
- Aluminum Alloy Bod

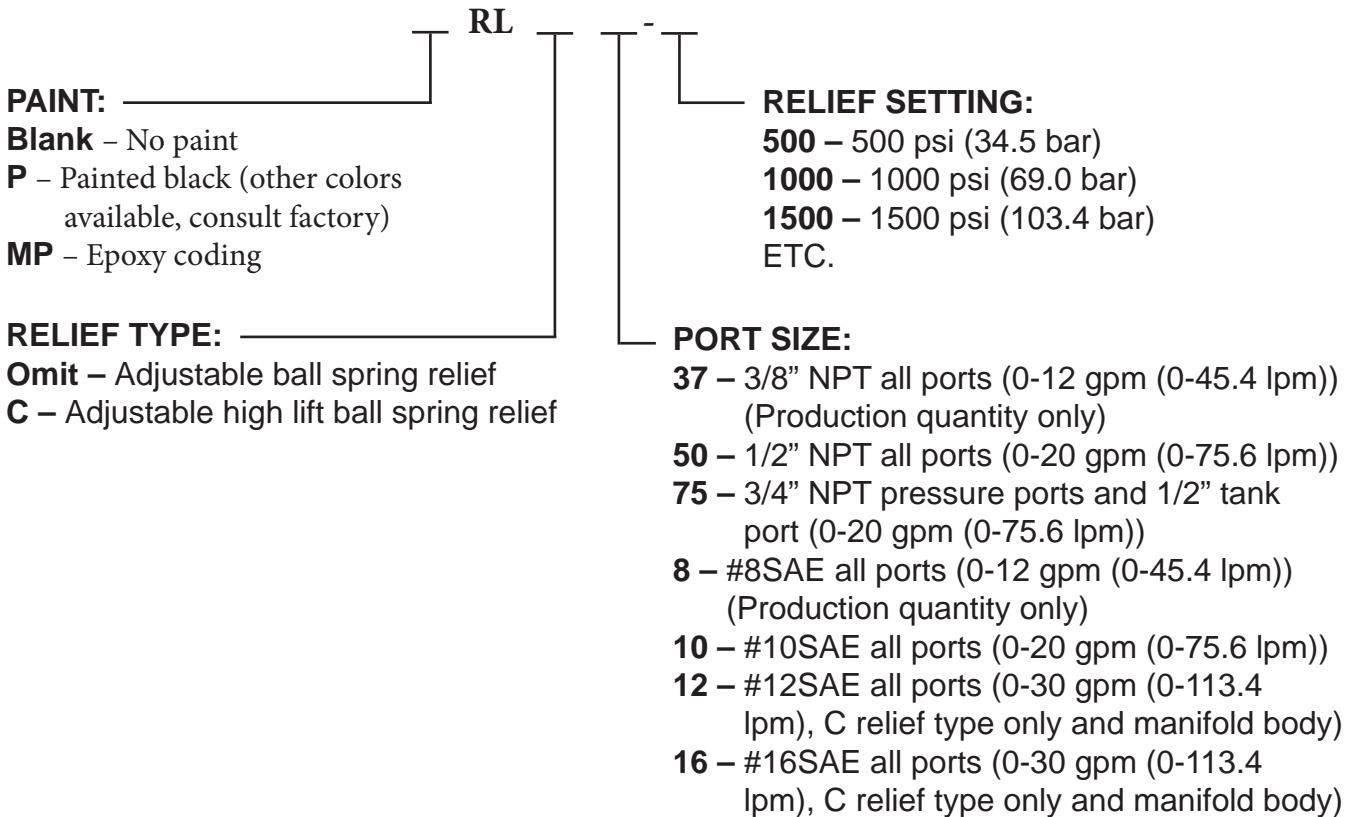
FEATURES:

- OPTIONAL HIGH LIFT BALL SPRING RELIEF reduces noise, heat and chatter.
- OPTIONAL O'RING PORTS to eliminate leakage.
- STEEL BALL will not jam, lock or seize and will always open.
- CHROME ALLOY STEEL BALL is a grade No. 25 ball.
- HARDENED ALLOY STEEL SEAT to reduce wear.
- SHOT PEENED STRESS RELEIVED steel spring to increase life and consistent results.

RL – GENERAL INFORMATION:

The Brand, adjustable relief valve is precision built, dependable and low priced. Both the RL and RLC are of the ball spring type, which is the most dependable type of relief valve. The ball will not jam, lock, or seize and will always open. The advantage of the RLC over the RL option is that cracking pressure at low and high flow is virtually the same. The RLC is also more stable when flow is traveling past the ball and spring. (See relief flow charts below)

RL – CREATING A MODEL CODE FOR RL'S:



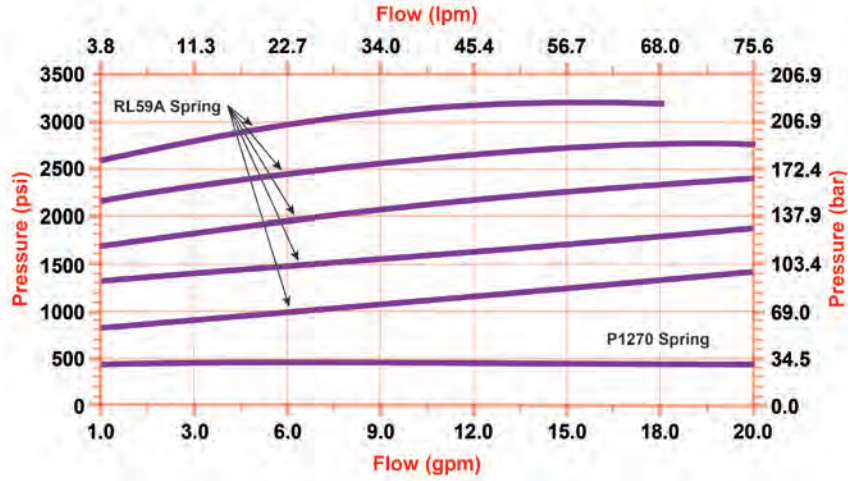
RL – EXAMPLES OF COMMON MODEL CODES:

- RL10-1500**.....Adjustable ball spring relief, all ports are #10SAE and the relief is set at 1500 psi (103 bar).
- RL50-1500**.....Adjustable ball spring relief, all ports are 1/2" NPT and the relief is set at 1500 psi (103 bar).
- RL75-2000**.....Adjustable ball spring relief, tank port is 1/2" NPT, pressure ports are 3/4" NPT and the relief is set at 2000 psi (138 bar).
- RLC75-3000**.....Adjustable high lift ball spring relief, tank port is 1/2" NPT, pressure ports are 3/4" NPT and the relief is set at 3000 psi (207 bar).
- RLC16-1500**..... Adjustable high lift ball spring relief, rated for 30 gpm (113 lpm), #16SAE all ports, manifold body and the relief is set at 1500 psi (103 bar).

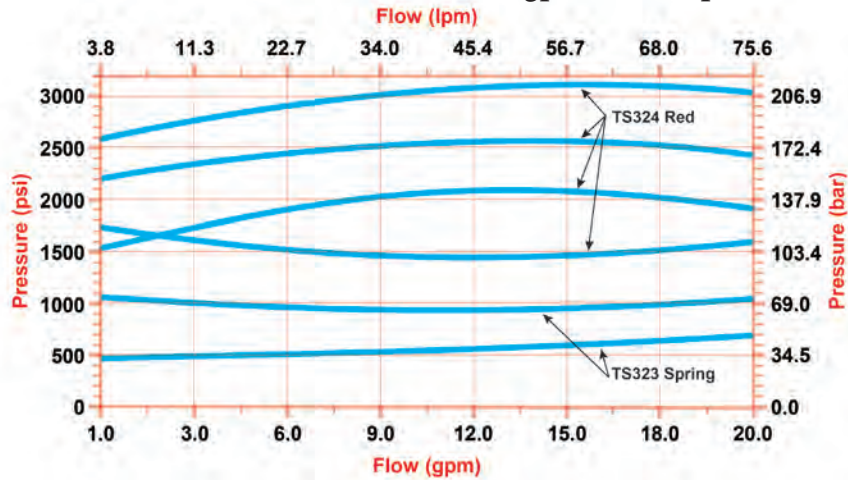


RL - FLOW AND PRESSURE INFO:

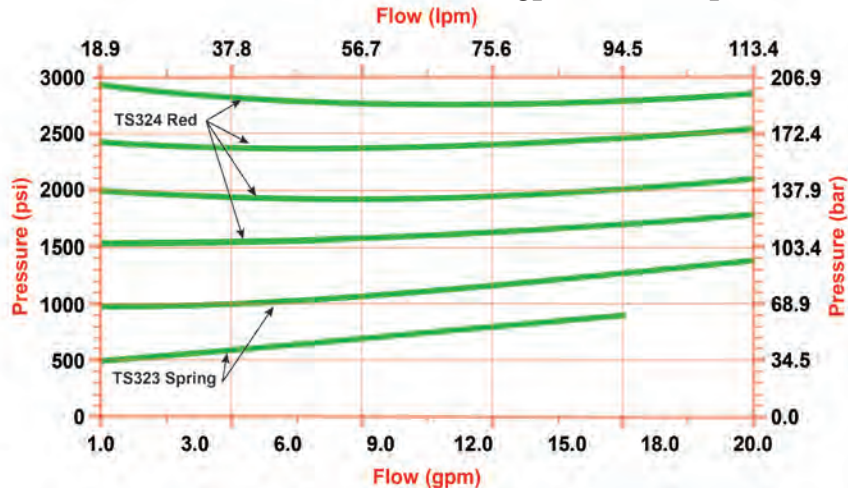
Pressure VS. Flow for RL



Pressure VS. Flow for RLC (0-20 gpm (0-75.6 lpm))



Pressure VS. Flow for RLC (0-30 gpm (0-113.4 lpm))



DIMENSIONAL DATA: Inches & [millimeters]
RL75-3000

